



★ **sexyhair**

SEXY IS KNOWLEDGE

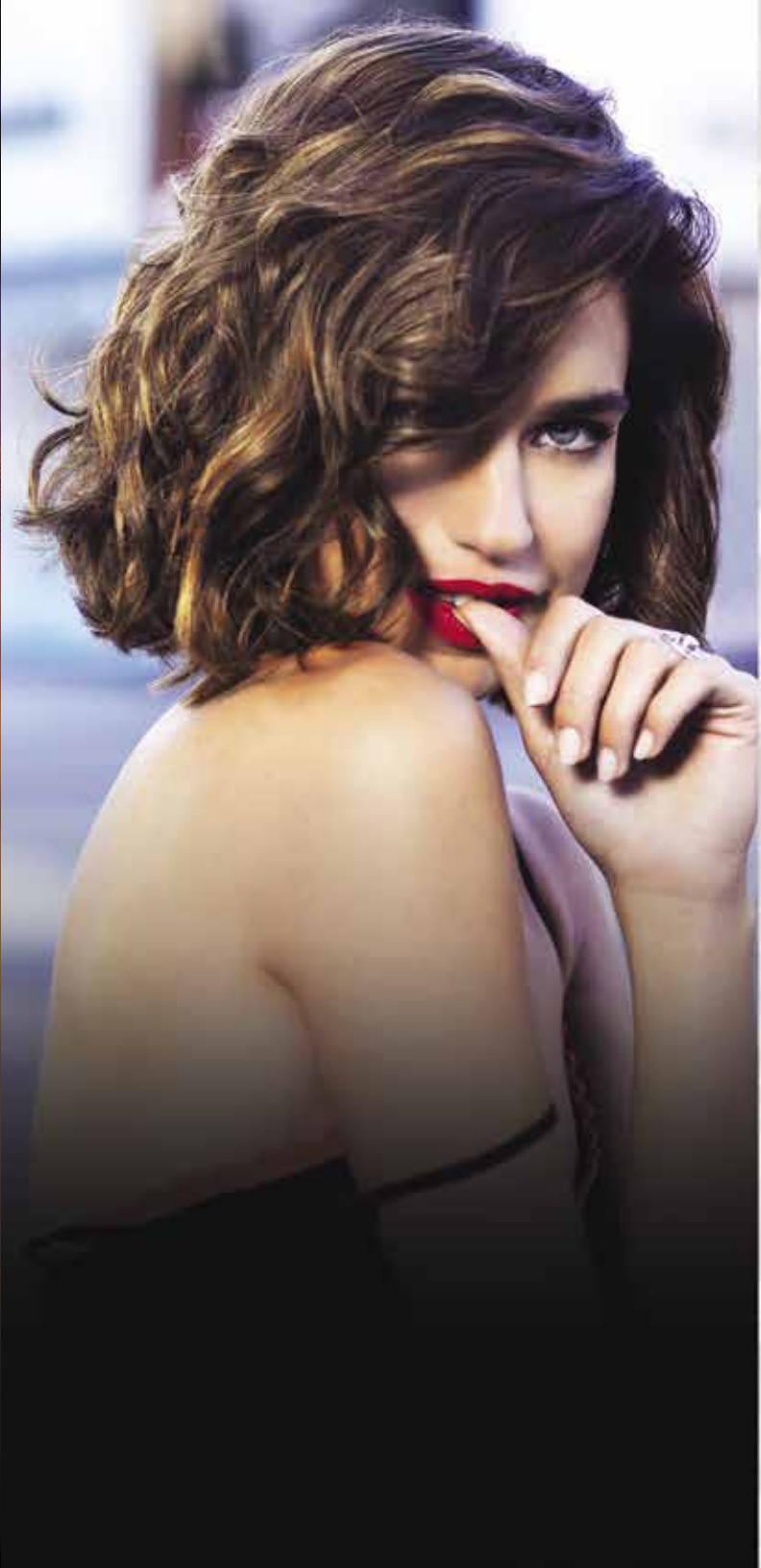
Product Knowledge Guide

CREATED IN
CALIFORNIA

The background of the entire image is a photograph of several palm trees silhouetted against a vibrant sunset sky. The sky transitions from a deep purple at the top to a bright orange and yellow near the horizon, with some light clouds. The palm trees are dark and their fronds are clearly visible against the colorful sky.

★ sexyhair.

CREATED IN
CALIFORNIA



★ **sexyhair**

SEXY IS BIG SEXY HAIR



Big Sexy Hair offers a solution for customers with **fine, thin hair** that are looking for additional volume, thickness and body.



EXTRA VOLUMIZING SHAMPOO

EXTRA VOLUMIZING SHAMPOO

pH: **5.00-6.00**

- ★ Helps provide volume
- ★ Helps provide moisture and hydration
- ★ SLS & SLES Sulfate Free

HOW TO USE Lather, rinse and repeat if necessary. Use in combination with Volumizing Conditioner for better results.



VOLUMIZING CONDITIONER

VOLUMIZING CONDITIONER

pH: **6.00-7.00**

- ★ Helps provide volume
- ★ Helps provide moisture and hydration
- ★ SLS & SLES Sulfate Free

HOW TO USE Apply evenly on cleansed hair and rinse. Use in combination with Volumizing Shampoo or Extra Volumizing Shampoo for better results.



DRY SHAMPOO

DRY SHAMPOO

- ★ Helps remove oils and impurities
- ★ Helps provide additional volume

HOW TO USE Shake well. Hold can 8 inches away and spray onto hair and scalp, focusing on roots. Leave on for 2 minutes and brush out excess product.



FULL BLOOM

LONG LASTING THICKENING & REFRESHING SPRAY
HOLD: 4

- ★ Helps provide added volume with hold
- ★ Up to 72 hours of humidity resistance
- ★ Improves manageability with added shine
- ★ Up to 24 hours fragrance revival
- ★ Offers thermal protection

HOW TO USE Spray on damp hair from roots to ends. Lift hair away from scalp while blow drying to lock in style.



SILK FINISH

FEATHERWEIGHT SERUM

- ★ Doesn't weigh down hair
- ★ Up to 72 hours of humidity resistance
- ★ Improves smoothness, manageability, and adds shine
- ★ Offers thermal protection

HOW TO USE Emulsify into palms and apply on damp or dry hair.



BLOW DRY VOLUMIZING GEL

BLOW DRY VOLUMIZING GEL
HOLD: 5

- ★ Helps provide added volume with hold
- ★ Up to 72 hours of humidity resistance
- ★ Improves smoothness and manageability
- ★ Offers thermal protection

HOW TO USE On damp hair, apply gel from roots to ends and blow dry to expand volume.



TOTAL BODY

BLOW DRY BODYFYING LOTION
HOLD: 6

- ★ Provides up to 2x times the body
- ★ Provides medium and flexible hold
- ★ Helps add shine

HOW TO USE Work one or two pumps evenly into damp hair and blow dry with a round brush.



BIG ALTITUDE[®]

BODIFYING BLOW DRY MOUSSE

HOLD: **3**

- ★ Helps provide volume with hold
- ★ Up to 72 hours of humidity resistance
- ★ Offers thermal protection

HOW TO USE Shake well. Evenly apply mousse from roots to ends and comb through. Gives body and density without product feel.



ROOT PUMP[™]

VOLUMIZING SPRAY MOUSSE

HOLD: **6**

- ★ Helps provide added volume with medium hold
- ★ Up to 72 Hours of humidity resistance
- ★ Offers thermal protection

HOW TO USE Shake well. For lift, spray into damp hair at the scalp and mid shaft areas. Blow dry hair away from scalp.



ROOT PUMP PLUS

HUMIDITY RESISTANT VOLUMIZING SPRAY MOUSSE

HOLD: **7**

- ★ Helps provide added volume with high hold
- ★ Up to 72 Hours of humidity resistance
- ★ Offers thermal protection

HOW TO USE Shake well. For lift, spray into damp hair at the scalp and mid shaft areas. Blow dry hair away from scalp.



POWDER PLAY LITE

SOFT VOLUMIZING &
TEXTURIZING POWDER

HOLD: **4**

- ★ Provides up to 50% more volume
- ★ Talc-free lightweight powder
- ★ Invisible even in the darkest hair color

HOW TO USE Pump on dry hair directly at the root and/or throughout hair for soft and lightweight volume and texture.



POWDER PLAY™

VOLUMIZING &
TEXTURIZING POWDER

HOLD: **6**

- ★ Helps provide added volume
- ★ Colorless on hair

HOW TO USE Apply at the root on dry hair for an instant lift. Sprinkle through hair for lightweight texture, separation and control.



SPRAY & PLAY™

VOLUMIZING HAIRSPRAY
SHINE: 7 | HOLD: 7

- ★ Helps provide volume with hold and shine
- ★ Up to 72 Hours of humidity resistance

HOW TO USE Spray into styled hair for lift and hold.



SPRAY & PLAY HARDER

FIRM VOLUMIZING HAIRSPRAY
SHINE: 8 | HOLD: 8

- ★ Helps provide volume with harder hold and shine
- ★ Up to 72 Hours of humidity resistance

HOW TO USE Shake well. Spray into dry hair for volume and a firm, all day hold. Pick up hair and spray at the root for extra volume.



SPRAY & STAY®

INTENSE HOLD HAIRSPRAY
SHINE: 9 | HOLD: 10

- ★ Helps provide more volume with intense hold and shine
- ★ Up to 72 hours of humidity resistance

HOW TO USE Spray liberally onto styled hair or updos for extreme hold and shine.



SPRITZ & STAY®

INTENSE HOLD, FAST DRYING,
NON-AEROSOL HAIRSPRAY
SHINE: 10 | HOLD: 10

- ★ Helps provide volume with maximum hold & shine
- ★ Up to 72 hours of humidity resistance

HOW TO USE Spray liberally onto styled hair or updos for extreme hold and shine.



PUSH UP

INSTANT VOLUME THICKENING SPRAY

SHINE: 4 | HOLD: 4

- ★ Provides up to 2x the volume
- ★ Helps provide added hold and shine
- ★ Up to 72 hours of humidity resistance

HOW TO USE Spray on dry hair from roots to ends. Layer on finished style for more thickness and hold.



WHAT A TEASE®

FIRM VOLUMIZING HAIRSPRAY

HOLD: 9

- ★ Helps provide volume with hold
- ★ Up to 72 hours of humidity resistance

HOW TO USE Lift and spray into dry hair for more volume and hold whenever a teased look is desired.



GET LAYERED

FLASH DRY THICKENING HAIRSPRAY

HOLD: 4-6

- ★ Helps provide added volume with hold & shine
- ★ Up to 72 Hours of humidity resistance
- ★ Offers Thermal Protection

HOW TO USE Apply to dry hair to build and secure hold. Layer over for longer lasting hold and shine.



★ sexyhair.

SEXY IS HEALTHY SEXY HAIR



Healthy Sexy Hair helps you care for your hair and helps your mind, your heart and your soul feel just as beautiful. The solution for **normal to dry hair** customers that need **increased moisture** and **nourishment**.



MOISTURIZING SHAMPOO

SHAMPOO NORMAL/DRY HAIR

pH: **5.00-6.00**

- ★ Helps provide moisture, slip, detangling, and shine
- ★ SLS & SLES Sulfate Free
- ★ Infused with Mimosa Flower Extract & Moonstones

HOW TO USE Lather, rinse and repeat if necessary. Use in combination with the Moisturizing Conditioner for better results.



MOISTURIZING CONDITIONER

CONDITIONER NORMAL/DRY HAIR

pH: **4.00-5.00**

- ★ Helps provide moisture, detangling, and slip
- ★ Helps add shine and reduce breakage
- ★ SLS & SLES Sulfate Free
- ★ Infused with Mimosa Flower Extract & Moonstones

HOW TO USE Apply evenly on cleansed hair and rinse. Use in combination with the Moisturizing Shampoo for better results.



TRI-WHEAT LEAVE IN

TRI-WHEAT LEAVE IN CONDITIONER

- ★ Up to 90% better detangling
- ★ Helps reduce breakage
- ★ Helps provide moisture, smoothness, and shine
- ★ Perfect base for any style or as cutting aid
- ★ Infused with Mimosa Flower Extract & Moonstones

HOW TO USE Spray on damp hair and comb through.



SO YOU WANT IT ALL

LEAVE-IN TREATMENT

- ★ Up to 99% breakage reduction
- ★ Improves combability and manageability
- ★ Helps provide moisture and adds shine
- ★ Offers thermal protection up to 450°F
- ★ Infused with Mimosa Flower Extract & Moonstones

HOW TO USE Spray on damp hair and comb through for an even application. Blow dry and style as desired.

HEALTHY SEXY HAIR

★ sexyhair. product knowledge guide 2019



HAIR LAUNDRY

DRY SHAMPOO

- ★ Easy to use non-aerosol spray dry shampoo
- ★ Helps absorb oils and impurities
- ★ Infused with Mimosa Flower Extract & Moonstones

HOW TO USE Part, lift and spray 4-5 inches from the root in dry hair. Remove excess product by massaging or brushing.



FRESH HAIR

AIR DRY STYLING MOUSSE

HOLD: **5**

- ★ Helps enhance natural texture
- ★ Helps control hair and prevent frizz
- ★ Infused with Mimosa Flower Extract & Moonstones

HOW TO USE Work one or two pumps evenly into damp hair and air dry for a natural, tousled look.



LOVE OIL

MOISTURIZING OIL

- ★ Helps provide moisture and reduce breakage
- ★ Improves smoothness and controls frizz
- ★ Offers thermal protection and adds shine
- ★ Infused with Mimosa Flower Extract & Moonstones

HOW TO USE Apply a small amount on damp or dry hair from mid length to ends for shine, moisture & frizz control.



STYLING PASTE

TEXTURE PASTE

SHINE: **4** | HOLD: **6**

- ★ Provides medium, pliable hold and control
- ★ Adds a satin finish
- ★ Infused with Mimosa Flower Extract & Moonstones

HOW TO USE Apply on dry hair for detailing, texture and separation.



SURFRIDER

DRY TEXTURE SPRAY

SHINE: 2 | HOLD: 4

- ★ Helps provide texture and definition
- ★ Easy to layer for added texture
- ★ Infused with Mimosa Flower Extract & Moonstones

HOW TO USE Spray on to styled hair for added texture.



SO TOUCHABLE

WEIGHTLESS HAIRSPRAY

SHINE: 7 | HOLD: 3

- ★ Provides light hold and shine
- ★ Infused with Mimosa Flower Extract & Moonstones

HOW TO USE Spray on your finished style to add light hold and body.



PURE ADDICTION

ALCOHOL FREE HAIRSPRAY

SHINE: 8 | HOLD: 5

- ★ Alcohol Free
- ★ Provides added hold, shine and humidity resistance
- ★ Infused with Mimosa Flower Extract & Moonstones

HOW TO USE Spray into styled hair to hold and finish.



★ **sexyhair.**

SEXY IS STYLE SEXY HAIR



Your ultimate toolbox to create infinite styles ranging from the lightest to the firmest hold and matte to high shine finishes. These **high impact products** can be used on their own, or combined to create your own unique **styling cocktail**. Use them on all hair lengths and textures.



H₂NO

DRY SHAMPOO
SHINE: **3** | HOLD: **1**

- ★ Instantly refreshes hair
- ★ Absorb oils and odors
- ★ Helps extend the life of your style and prolong the time between shampoos

HOW TO USE Shake well, part, lift and spray 4-5 inches from the root in dry hair. Massage thoroughly with fingertips. If excess product appears, remove with the swipe of a brush.



HARD UP[®]

HARD HOLDING GEL
SHINE: **9** | HOLD: **10**

- ★ Provides extreme hold to most hair types
- ★ Formula doesn't flake

HOW TO USE Apply to damp or dry hair and style as desired.



BLOW IT UP

VOLUMIZING GEL FOAM
HOLD: **7**

- ★ Provides up to 50% more volume!
- ★ Gives some texture

HOW TO USE Dispense a small amount into hands, work through damp hair and style.



MATTE CLAY

MATTE TEXTURIZING CLAY
SHINE: 0 | HOLD: 7

- ★ Separates, defines and molds hair in place
- ★ Helps tame unruly ends
- ★ Washes off easily

HOW TO USE Soften between palms and apply evenly throughout hair.



ROUGH & READY

DIMENSION WITH HOLD
SHINE: 4 | HOLD: 7

- ★ Provides pliable hold with a unique texture
- ★ Allows you to mold, define and shape easily

HOW TO USE Emulsify a small amount into hands. Apply into dry hair to mold, define and shape.



CONTROL MANIAC™

STYLING WAX
SHINE: 7 | HOLD: 7

- ★ Wax texture provides definition
- ★ Creates strong, long-lasting shapes and styles

HOW TO USE Work a small amount through dry hair and style.



FRENZY™

MATTE TEXTURIZING PASTE
SHINE: 2 | HOLD: 8

- ★ Creates fullness, texture and definition
- ★ Helps create bulk on finer hair

HOW TO USE Apply to dry hair for flexible, bulked-up dry texture.



SHAPING CRÈME

PLIABLE SHAPING CRÈME
SHINE: 5 | HOLD: 6

- ★ Flexible formula helps create soft, durable styles
- ★ Humidity resistant

HOW TO USE Use a small amount on damp hair to create a soft finished shape or apply to dry hair for a firmer hold.



SLEPT IN™

TEXTURE CRÈME
SHINE: 4 | HOLD: 3

- ★ Provides soft texture and control
- ★ Won't weigh hair down
- ★ Washes off easily

HOW TO USE Apply to damp or dry hair and style as desired.



PLAY DIRTY™

DRY WAX
SHINE: 4 | HOLD: 4

- ★ Controls and separates hair for easy styling
- ★ Provides body and dimension
- ★ Helps achieve a “second day” look

HOW TO USE Spray lightly into dry hair for added texture and finishing hold.



SPRAY CLAY

TEXTURIZING SPRAY CLAY
SHINE: 1 | HOLD: 7

- ★ Innovative aerosol application for fine, even product distribution
- ★ Helps provide all over texture with a matte finish

HOW TO USE Spray into hair for pliable hold and texture to finish desired style.

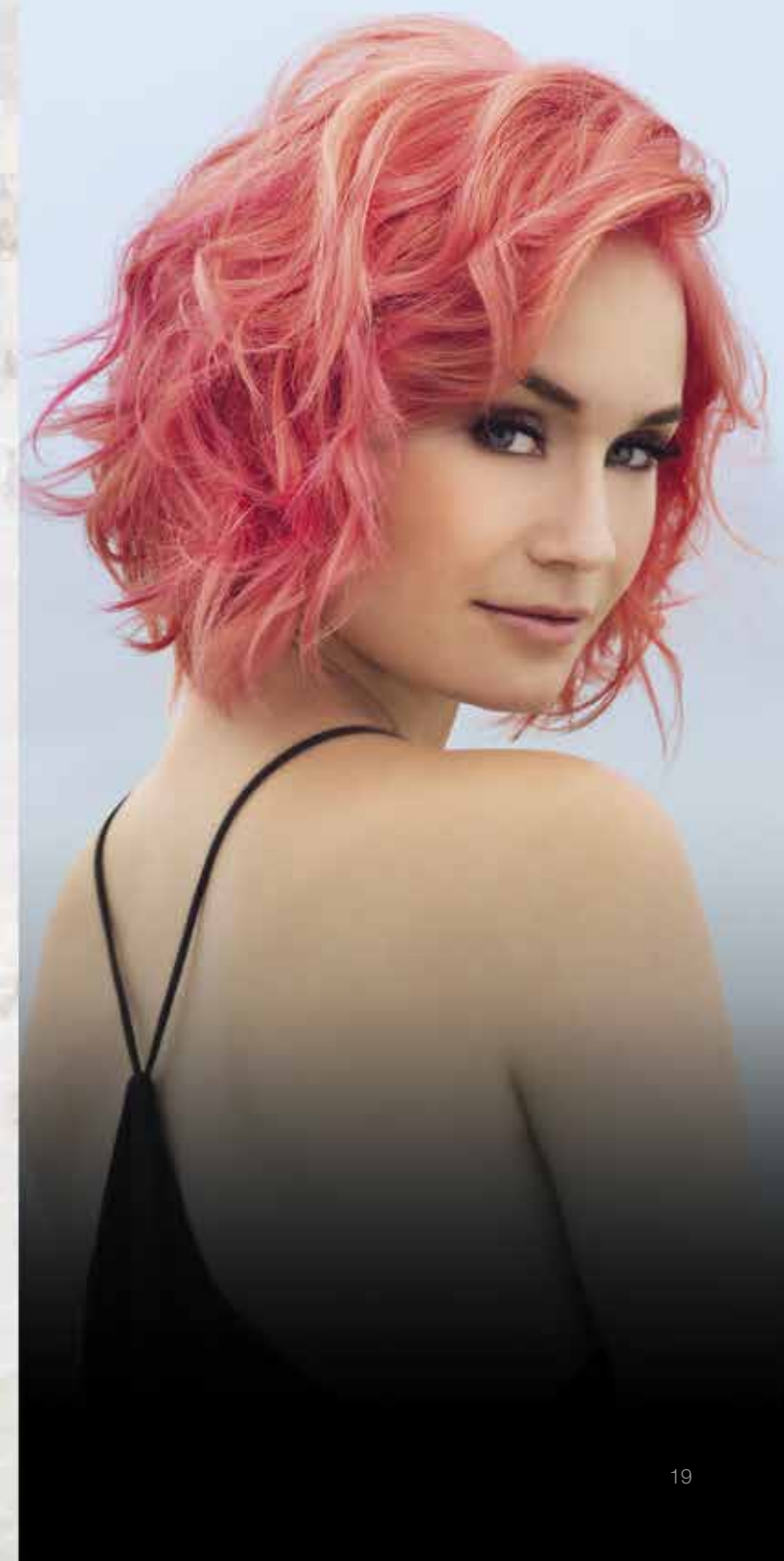
★ sexyhair.

SEXY IS VIBRANT SEXY HAIR



Discover Vibrant Sexy Hair, a **collection** created with Rose & Almond Oil proven to keep strands looking vibrant for **up to 75 uses***.

*Vibrant color for up to 75 uses with the shampoo and conditioner regimen.



VIBRANT SEXY HAIR

★ sexyhair. product knowledge guide



COLOR LOCK SHAMPOO

COLOR CONSERVE SHAMPOO

pH: **5.00-6.00**

- ★ Vibrant Color for up to 75 uses when used with Color Lock Conditioner
- ★ SLS & SLES Sulfate Free
- ★ Infused with Rose & Almond Oil

HOW TO USE Lather, rinse and repeat if necessary. Use in combination with Color Lock Conditioner for best results.



COLOR LOCK CONDITIONER

COLOR CONSERVE CONDITIONER

pH: **3.50-4.50**

- ★ Vibrant Color for up to 75 uses when used with Color Lock Shampoo
- ★ SLS & SLES Sulfate Free
- ★ Infused with Rose & Almond Oil

HOW TO USE Apply evenly on cleansed hair and rinse. Use in combination with Color Lock Shampoo for best results.



COLOR LOCK HAIRSPRAY

UV COLOR PROTECTION HAIRSPRAY

SHINE: **8** | HOLD: **6**

- ★ Anti-fade UV color protection
- ★ Helps provide shine & hold to your style
- ★ Infused with Rose & Almond Oil

HOW TO USE Spray this fast drying hairspray into styled hair for hold, shine and color protection.



ROSE ELIXIR

DRY OIL MIST

- ★ Helps provide smoothness and shine
- ★ Infused with Rose & Almond Oil

HOW TO USE Spray lightly damp hair and style as desired. Can be sprayed on dry hair if desired.

★ **sexyhair.**

SEXY IS STRONG SEXY HAIR



When used as a 3 step system, **Strong Sexy Hair** is proven to **reduce breakage by up to 80%***! Infused with Aloe Vera and Mango Butter, Strong Sexy Hair helps improve hair's natural **strength and flexibility**.

*When used in combination with the Shampoo, Conditioner & Core Flex Leave-In Reconstructor. Products were tested by an independent laboratory



STRONG SEXY HAIR

★ sexyhair. product knowledge guide



STRENGTHENING SHAMPOO

NOURISHING ANTI-BREAKAGE SHAMPOO

pH: **4.75-5.50**

- ★ Helps provide strength and flexibility to damaged hair
- ★ Reduces breakage up to 80%*
- ★ SLS & SLES Sulfate Free
- ★ Infused with Aloe Vera & Mango Butter

HOW TO USE Lather, rinse and repeat if necessary. Use in combination with Strengthening Conditioner & Core Flex Anti-Breakage Leave-In Reconstructor.



STRENGTHENING CONDITIONER

NOURISHING ANTI-BREAKAGE CONDITIONER

pH: **3.50-4.50**

- ★ Helps provide strength and flexibility to damaged hair
- ★ Reduces breakage up to 80%*
- ★ SLS & SLES Sulfate Free
- ★ Infused with Aloe Vera & Mango Butter

HOW TO USE After cleansing with Strengthening Shampoo, apply evenly, comb through and rinse. Use in combination with Core Flex Anti-Breakage Leave-In Reconstructor.

*When used in combination with the Shampoo, Conditioner & Core Flex Leave-In Reconstructor. Products were tested by an independent laboratory.



CORE STRENGTH

NOURISHING ANTI-BREAKAGE MASQUE

- ★ Helps strengthen and give flexibility to hair
- ★ Infused with Aloe Vera & Mango Butter

HOW TO USE After cleansing with Strengthening Shampoo, apply evenly, comb through and rinse. Use in combination with Core Flex Anti-Breakage Leave-In Reconstructor.



CORE FLEX

ANTI-BREAKAGE LEAVE-IN RECONSTRUCTOR

- ★ Helps provide strength and flexibility to damaged hair
- ★ Reduces breakage up to 80%*
- ★ Infused with Aloe Vera & Mango Butter

HOW TO USE Apply on damp hair from roots to ends and style as desired.



SEAL THE DEAL

SPLIT END MENDER LOTION

- ★ Mends split ends up to 92%
- ★ Infused with Aloe Vera and Mango Butter

HOW TO USE Can be applied on damp or dry hair. On damp hair, apply from mid-shaft to ends before any other styling product. On dry hair, lightly apply to ends. Reapply as needed.



ACTIVE RECOVERY

REPAIRING BLOW DRY FOAM

- ★ Up to 99% breakage reduction
- ★ Lightweight blow dry foam helps repair as you style
- ★ Infused with Aloe Vera and Mango Butter

HOW TO USE Shake well. Apply on damp hair and comb through. Style as usual.



★ **sexy**hair.

SEXY IS CURLY SEXY HAIR



Curly hair can be temperamental! In fact, curls need a ton of **attention, moisture and protection** to keep their bounce and avoid frizz. Curly Sexy Hair, formulated with **Sea Algae & Cacay Oil** helps you get the best out of your curls.

CURLY SEXY HAIR

★ sexyhair product knowledge guide



CURL ENHANCING SHAMPOO

CURL MOISTURIZING SHAMPOO

pH: **4.75-5.50**

- ★ Helps enhance curls of all types
- ★ Helps restore moisture and fight frizz
- ★ SLS & SLES Sulfate Free
- ★ Infused with Sea Algae & Cacay Oil

HOW TO USE Lather, rinse and repeat if necessary. Use in combination with the Curl Enhancing Conditioner for better results.



CURL ENHANCING CONDITIONER

CURL MOISTURIZING CONDITIONER

pH: **3.50-4.50**

- ★ Helps enhance curls of all types
- ★ Helps restore moisture and fights frizz
- ★ SLS & SLES Sulfate Free
- ★ Infused with Sea Algae & Cacay Oil

HOW TO USE Apply evenly from roots to ends, comb through and rinse out. Use in combination with the Curl Enhancing Shampoo for better results.



CURLING CRÈME

CURL MOISTURIZING CONTROL CRÈME

- ★ Provides light control
- ★ Helps maintain moisture and combat frizz
- ★ Infused with Sea Algae & Cacay Oil

HOW TO USE Evenly apply to damp hair. Blow dry with a diffuser for soft curls or air dry for a more defined look.



CURL CONTROL

CURL CONTROL GEL

- ★ Provides medium control
- ★ Helps add definition and shine to curly hair
- ★ Infused with Sea Algae & Cacay Oil

HOW TO USE Apply evenly on damp hair and scrunch. Use on dry hair for added definition. Blow dry with a diffuser for soft curls or air dry for a more defined look.



ULTRA CURL

CURL SUPPORT STYLING CRÈME-GEL

- ★ Provides high control
- ★ Helps add great definition and a long-lasting shape
- ★ Infused with Sea Algae & Cacay Oil

HOW TO USE Apply evenly on damp hair. Blow dry with a diffuser for soft curls or air dry for a more defined look.



CURL POWER®

CURL BOUNCE MOUSSE

- ★ Provides light control
- ★ Helps tame unruly curls, add definition and frizz control
- ★ Infused with Sea Algae & Cacay Oil

HOW TO USE Shake well. Spray into and over damp hair. Gently work through with hands. Blow dry with a diffuser for soft curls or air dry for a more defined look.



CURL RECOVER

CURL REVIVING SPRAY

- ★ Helps refresh your curls
- ★ Infused with Sea Algae & Cacay Oil

HOW TO USE Spray on dry, previously styled hair and scrunch to revive curls.

★ **sexyhair.**

SEXY IS HOT SEXY HAIR



Hot Sexy Hair helps protect hair against heat damage! **Designed and formulated to protect hair at up to 450°F**, these products can be used by themselves or in combination with other styling products.



HOT SEXY HAIR

★ sexyhair. product knowledge guide



PREP ME

450°F HEAT PROTECTION BLOW DRY PRIMER

- ★ Provides heat protection up to 450°F/230C
- ★ Provides up to 68% reduction in breakage
- ★ Ideal for layering with other styling products

HOW TO USE Apply to damp hair. Layer with other products if desired. Blow dry and style as usual.



SUPPORT ME

450°F HEAT PROTECTION SETTING HAIRSPRAY
SHINE: 7 | HOLD: 5

- ★ Provides heat protection up to 230C
- ★ Holds curls up to 24 hours
- ★ Firm hold and high shine

HOW TO USE Spray on to dry hair and set with a curling iron or hot rollers. Spray after styling to finish and hold the style.



PROTECT ME

450°F HOT TOOL PROTECTION SPRAY
SHINE: 7 | HOLD: 1

- ★ Provides heat protection up to 450°F/230C
- ★ Provides up to 78% reduction in breakage

HOW TO USE Spray liberally onto dry hair for shine and heat protection then use a hot iron.



CONTROL ME

THERMAL PROTECTION WORKING HAIRSPRAY
SHINE: 5 | HOLD: 5

- ★ Provides heat protection up to 450°F/230C
- ★ Holds styles for up to 72 hours
- ★ Great to use before ironing and to finish and hold styles
- ★ Ideal for loose curls and smooth styles

HOW TO USE Spray on dry hair before using a hot tool. Reapply after styling to finish and add hold.

★ **sexyhair.**

SEXY IS BLONDE SEXY HAIR



BLONDE & BRIGHT? It's possible! Formulated with Chamomile, Honey and Quinoa, the Blonde Sexy Hair line was designed to fulfill the needs of the most challenging and delicate blonde hair - color tone, dryness and breakage. Blonde Sexy Hair allows your hair to **stay bright, hydrated, and strong.**

BLONDE SEXY HAIR

★ sexyhair product knowledge guide 2019



BOMBSHELL BLONDE SHAMPOO

DAILY COLOR PRESERVING SHAMPOO

pH: **5.00-5.50**

- ★ Gently cleanses
- ★ SLS & SLES Sulfate Free
- ★ Infused with Chamomile, Honey & Quinoa

HOW TO USE Lather, rinse and repeat if necessary. Use in combination with Bombshell Blonde Conditioner for best results.



BRIGHT BLONDE SHAMPOO

VIOLET SHAMPOO FOR BLONDE, HIGHLIGHTED AND SILVER HAIR

pH: **5.00-5.50**

- ★ Helps counteract brassiness while gently cleansing
- ★ SLS & SLES Sulfate Free
- ★ Infused with Chamomile, Honey & Quinoa

HOW TO USE Lather, rinse and repeat if necessary. Use in combination with Bombshell Blonde Conditioner for best results. Use as often as needed to maintain color in between salon visits.



BOMBSHELL BLONDE CONDITIONER

DAILY COLOR PRESERVING CONDITIONER

pH: **4.00-5.00**

- ★ Helps hair keep hydrated and bright
- ★ SLS & SLES Sulfate Free
- ★ Infused with Chamomile, Honey & Quinoa

HOW TO USE After cleansing with Bright Blonde Shampoo or Bombshell Blonde Shampoo apply evenly on hair, comb through and rinse.

★ sexyhair.

SEXY IS SMOOTH SEXY HAIR



Smooth Sexy Hair is a regimen of products made with **Coconut Oil** and helps to **tame, soften and relax** dry, coarse, and disobedient hair into smooth, sleek, shiny and frizz free hair.



SMOOTH SEXY HAIR

★ sexyhair product knowledge guide 2019



SMOOTHING SHAMPOO

ANTI-FRIZZ SHAMPOO

pH: **4.50-5.50**

- ★ SLS & SLES Sulfate Free
- ★ Infused with Coconut Oil

HOW TO USE Lather, rinse and repeat if necessary. Use in combination with Smoothing Conditioner for better results.



SMOOTHING CONDITIONER

ANTI-FRIZZ CONDITIONER

pH: **3.00-4.00**

- ★ SLS & SLES Sulfate Free
- ★ Infused with Coconut Oil

HOW TO USE Apply evenly on hair and rinse. Use in combination with Smoothing Shampoo for better results.



SMOOTH ENCOUNTER

BLOW DRY EXTENDER CRÈME

- ★ Infused with Coconut Oil

HOW TO USE Apply a small amount to damp hair from roots to ends and blow dry as desired for smooth, sleek and shiny results that last.



SMOOTH & SEAL

SHINE & ANTI-FRIZZ SPRAY

- ★ Infused with Coconut Oil

HOW TO USE Spray over unruly hair to enhance shine, reduce frizz and protect styles.



SMOOTH LOCK PRO

CERAMIC FLAT IRON

- ★ 1.25" Ceramic Floating plates with over 5" of length
- ★ Smart Lock Technology silicone strips help create micro-tension across each strand, helping create smoother, shinier hair with long-lasting results
- ★ Dual ceramic heaters that go up to 450°F with 60 minute auto-shutoff
- ★ Dual Voltage – ideal for travel!

STYLE LOCK PRO

PROFESSIONAL HAIR DRYER

- ★ Lightweight hairdryer with a powerful 1875-watt DC Motor
- ★ Auto-Sensor Technology that automatically turns the dryer off when being put down, and back on when picked up
- ★ Ion On/Off switch for customized styling depending on hair type and desired results
- ★ OFF: Positive Ions help create volume and enhance texture
- ★ ON: Negative Ions help create smooth, sleek blowouts
- ★ Has 2 Speed Settings, 3 Temperature Settings & Cool Shot Feature

The background of the image features several palm trees in silhouette against a vibrant sunset sky. The sky transitions from a deep purple at the top to a bright orange and yellow near the horizon, with soft, wispy clouds. The palm trees are scattered across the frame, with some in the foreground and others in the background, creating a sense of depth and a tropical atmosphere.

★ sexyhair®

CREATED IN

CALIFORNIA